

# SOUTH POINTE PARK PIER

COMMUNITY PRE-CONSTRUCTION MEETING

NOVEMBER 1, 2012  
6 p.m.

MIAMIBEACH

# PIER HISTORY

- Original pier built c.1979
- Pier closed due to unsafe conditions
- Redesigned South Pointe Park re-opened in March, 2009
- New pier concept was approved by the City Commission in July, 2009
- New A/E firm contracted May 2011
- Environmental process September 2012



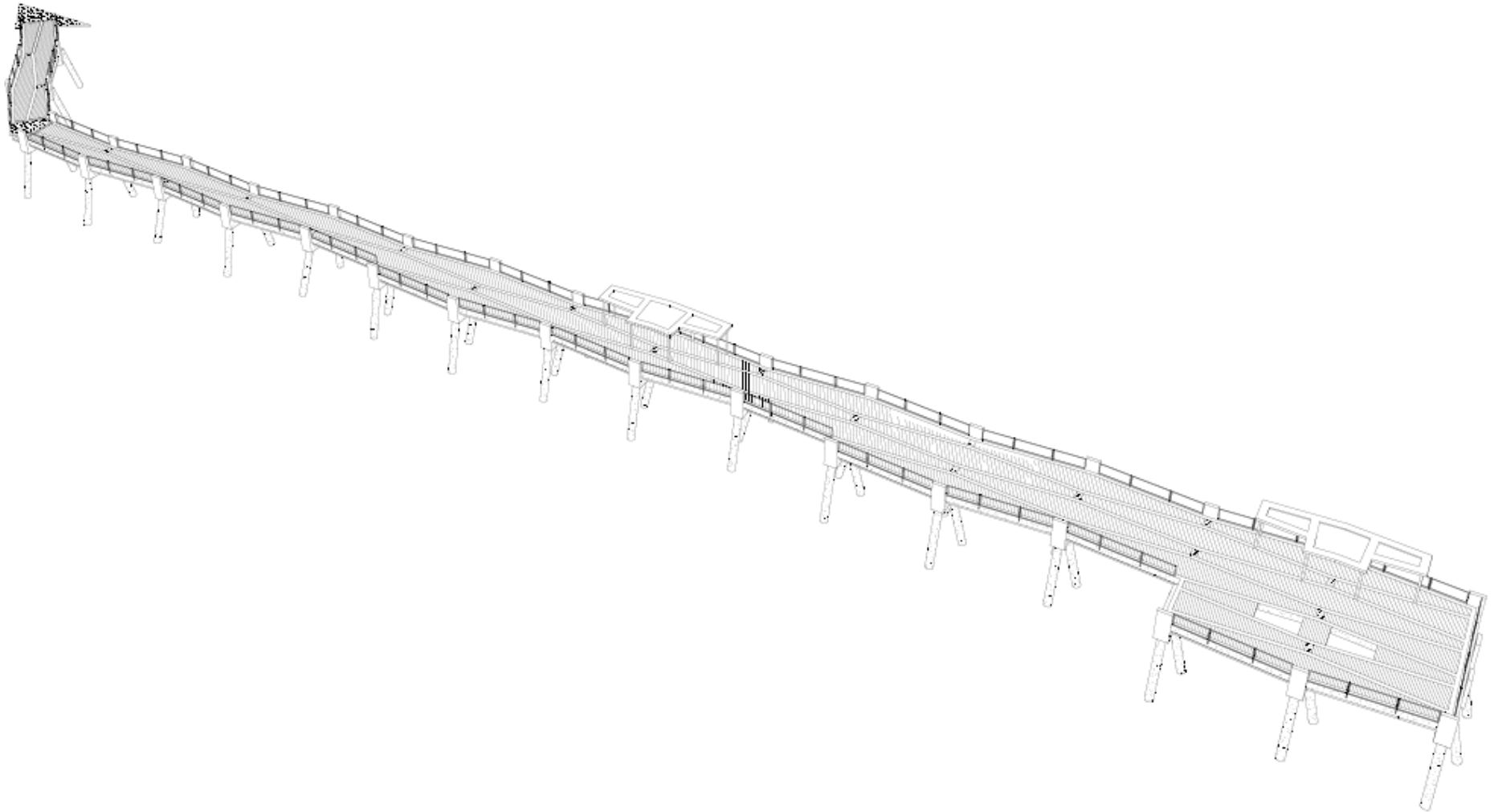
# PROJECT SCOPE

- Removal of existing pier
- Construction of new pier
  - “Telescoping” design
  - Integrated with South Pointe Park
  - New entry gate
- New pedestrian plaza / terminus
  - Connecting park, beach and pier

# LOCATION MAP



# NEW DESIGN

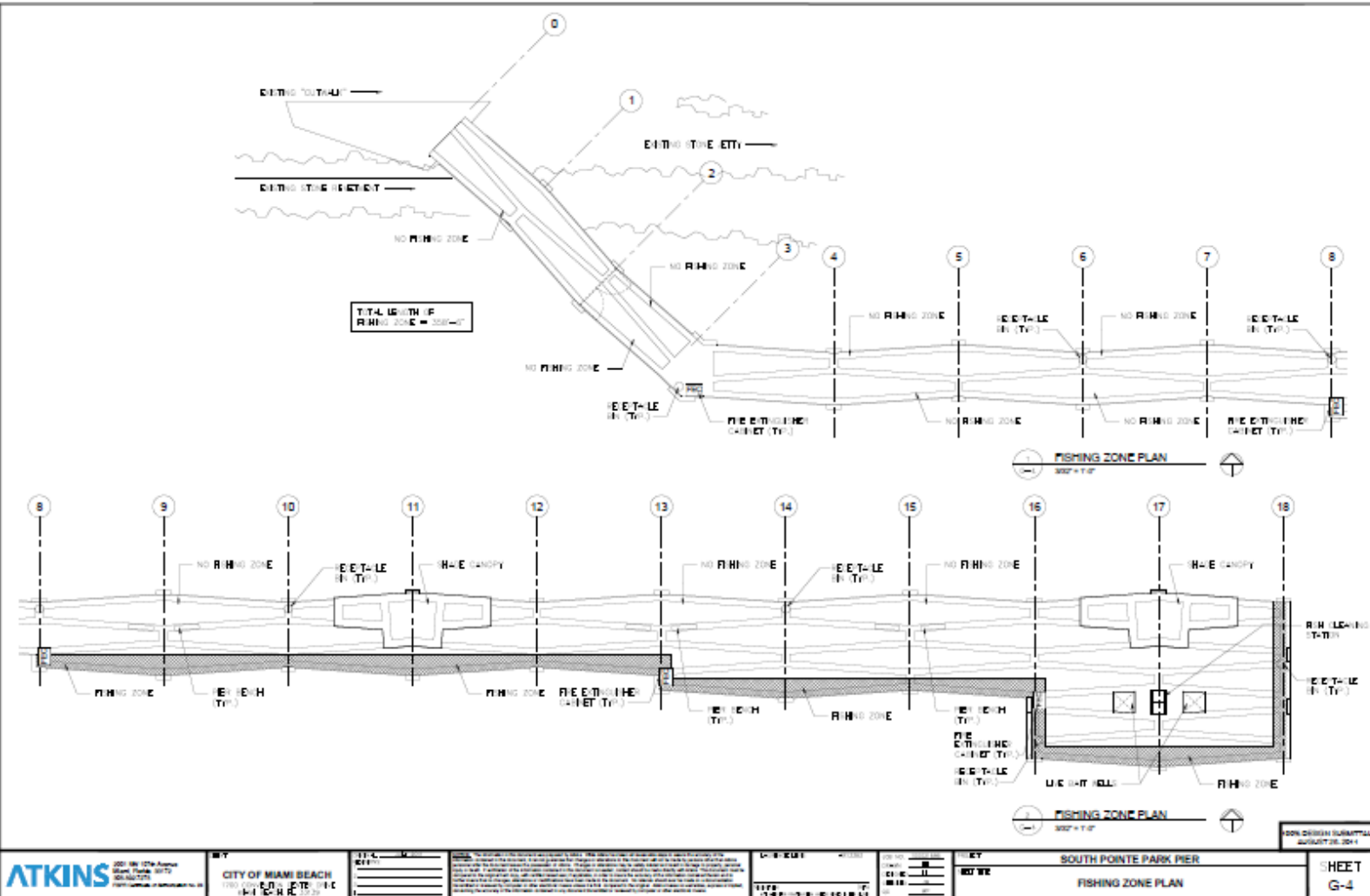


# PROJECT FACT SHEET

## • **Construction Schedule**

- Environmental Compliance/Coral Relocation: On-going
- Demolition: March 2013
- Construction concurrent with demolition
- Construction completion: spring 2014

# PERMITTED CONSTRUCTION DRAWINGS



**ATKINS**  
200 NW 17th Avenue  
Miami, Florida 33135  
(305) 575-1234

**CITY OF MIAMI BEACH**  
1700 BAYVIEW BLVD  
MIAMI BEACH, FL 33139

**DATE:** 08/28/14  
**BY:** [Signature]

**PROJECT:** SOUTH POINTE PARK PIER  
**NO.:** 14-0000000-001  
**TYPE:** PERMITTED CONSTRUCTION DRAWING

**SCALE:** 3/32" = 1'-0"  
**DATE:** 08/28/14  
**BY:** [Signature]

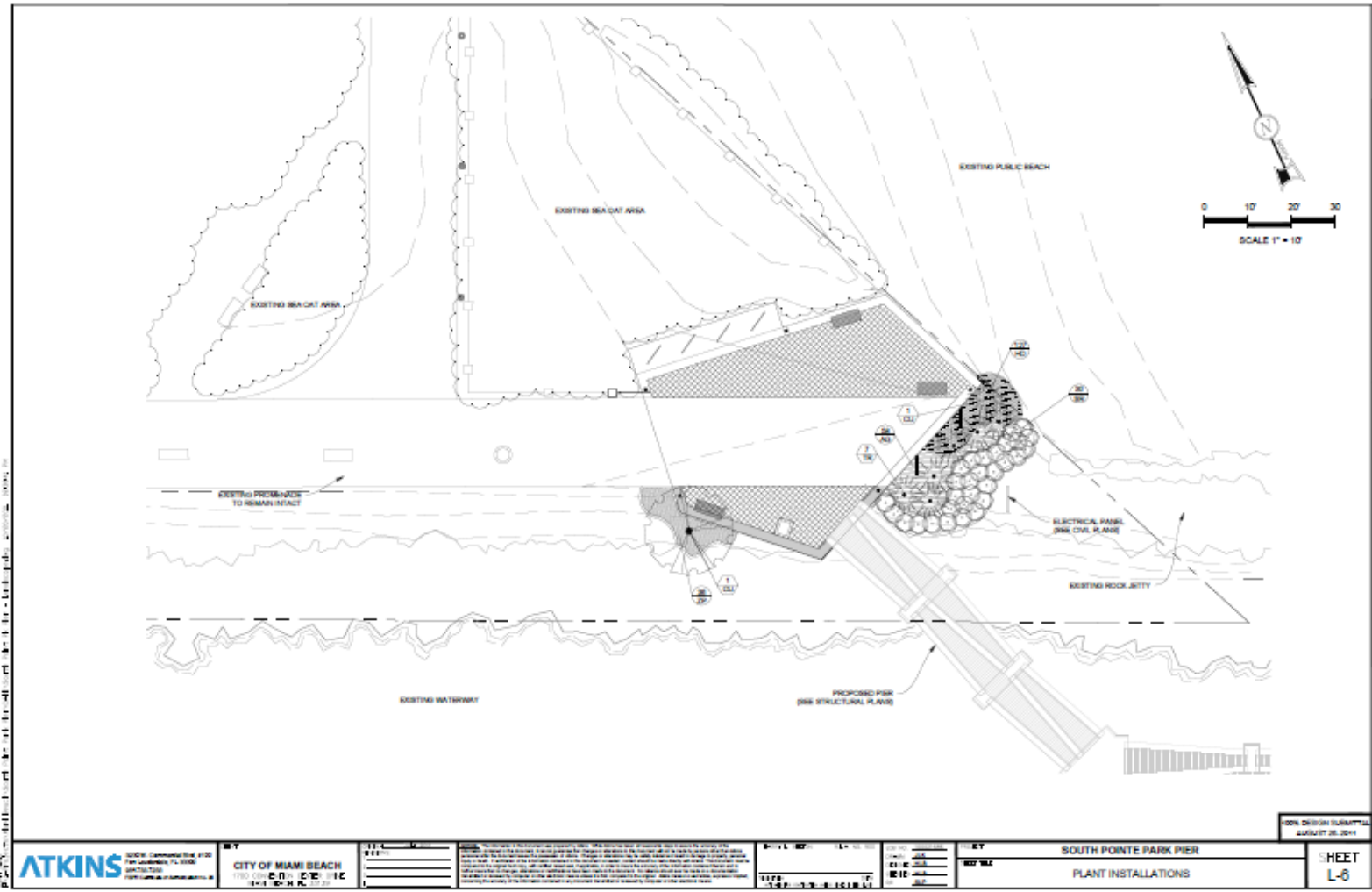
**PROJECT:** SOUTH POINTE PARK PIER  
**NO.:** 14-0000000-001  
**TYPE:** PERMITTED CONSTRUCTION DRAWING

**SHEET**  
G-4





# PERMITTED CONSTRUCTION DRAWINGS



# FEATURES / MATERIALS



CONTINUATION OF SOUTH POINTE  
PARK DESIGN ELEMENTS – SHADE

# FEATURES / MATERIALS



CONTINUATION OF SOUTH POINTE  
PARK DESIGN ELEMENTS

# FEATURES / MATERIALS



CONTINUATION OF SOUTH POINTE  
PARK DESIGN ELEMENTS – IPE WOOD

# FEATURES / MATERIALS



TURTLE SAFE LIGHTING

# PUBLIC INFORMATION

Monica Diaz, *Consultant Public Information Specialist*  
INFINITE SOURCE COMMUNICATIONS GROUP

Tel: 305.984.2715 | Email: [Monica@iscprgroup.com](mailto:Monica@iscprgroup.com)

THANK YOU!

**QUESTIONS  
AND  
ANSWERS**

