

**I  
T  
E  
M**

**F  
O  
U  
R**



# MIAMI BEACH

City of Miami Beach, 1700 Convention Center Drive, Miami Beach, Florida 33139, www.miamibeachfl.gov

## COMMITTEE MEMORANDUM

TO: Finance and Citywide Projects Committee Members

FROM: Kathie G. Brooks, Interim City Manager

DATE: July 9, 2012

SUBJECT: **Discussion of Normandy Shores Park Tot-Lot/Playground Project Conversion to Fitness Circuit/Passive Open Space Park Project**

### Introduction

This matter was referred by the Mayor and Members of the City Commission to the Finance and Citywide Projects Committee, at the request of Commissioner Jorge R. Exposito, at the March 21, 2012 Commission meeting. It was subsequently presented at the April 19, 2012 Finance and Citywide Projects Committee where it was referred to this meeting.

### Background

The Parks and Recreation Department requested funding for the subject project in the FY 2009/10 Capital Budget, which was approved and funded in the amount of \$135,500 to replace the existing playground that was beyond repair at the Normandy Shores Park. The funding request proposed the complete replacement of the playground, safety surface, new fencing and FF&E.

As the project was in development the Parks & Recreation Administration worked internally to develop a second phase of the park's revitalization which included a new recreation building/activity pavilion/ restroom with storage space, similar to the one built in Fairway Park, a water access/fishing dock, and the new playground with shade and safety surfacing. Attached please find a current aerial photograph and survey layout of the Normandy Shores Park.

The Parks and Recreation Administration met in January, 2012 with Commissioner Jorge Exposito and Normandy Shores HOA Projects Committee Chair Mark Wojak to present the second phase concept and gain initial feedback. Mr. Wojak agreed to take the concept to the Normandy Shores HOA board for their comments. On February 14, 2012, Mr. Wojak sent a correspondence stating that in lieu of the water access concept the residents on Normandy Shores would prefer a more open green space park which included the demolition of the existing storage building/restroom that is in very poor condition (this restroom is currently utilized by the tennis players using the tennis courts and a replacement is not included in this project however, there is a public restroom in the Normandy Shores Golf Club across the street), a Vita Course/ fitness circuit similar to the one installed in Lummus Park, park furnishings such as benches, trash receptacles etc., new fencing, sod and trees. Attached please find a copy of Mr. Wojak's February 14, 2012 correspondence.

### Conclusion

As previously stated, there is a \$135,500 capital budget allocation for the proposed playground renovation at the Normandy Shores Park. Based on previous installations of similar fitness circuits, passive park components such as benches, irrigation, sod, trees and fencing, the Parks and Recreation Administration believes this allocation will be sufficient to accomplish the revised program as requested by the residents. The Administration requests the Finance and Citywide Projects Committee please discuss this matter and provide direction as how to proceed.

KGB/MS/KS

F:\RCPA\SALL\Previous\KEVIN\Commission Committee Meetings\FCWPC 7-9 TO 7-12-2012\7-9-12 F&CWP Committee - Discussion on Normandy Shores Park Reconfiguration to Vita Course and Passive park.doc

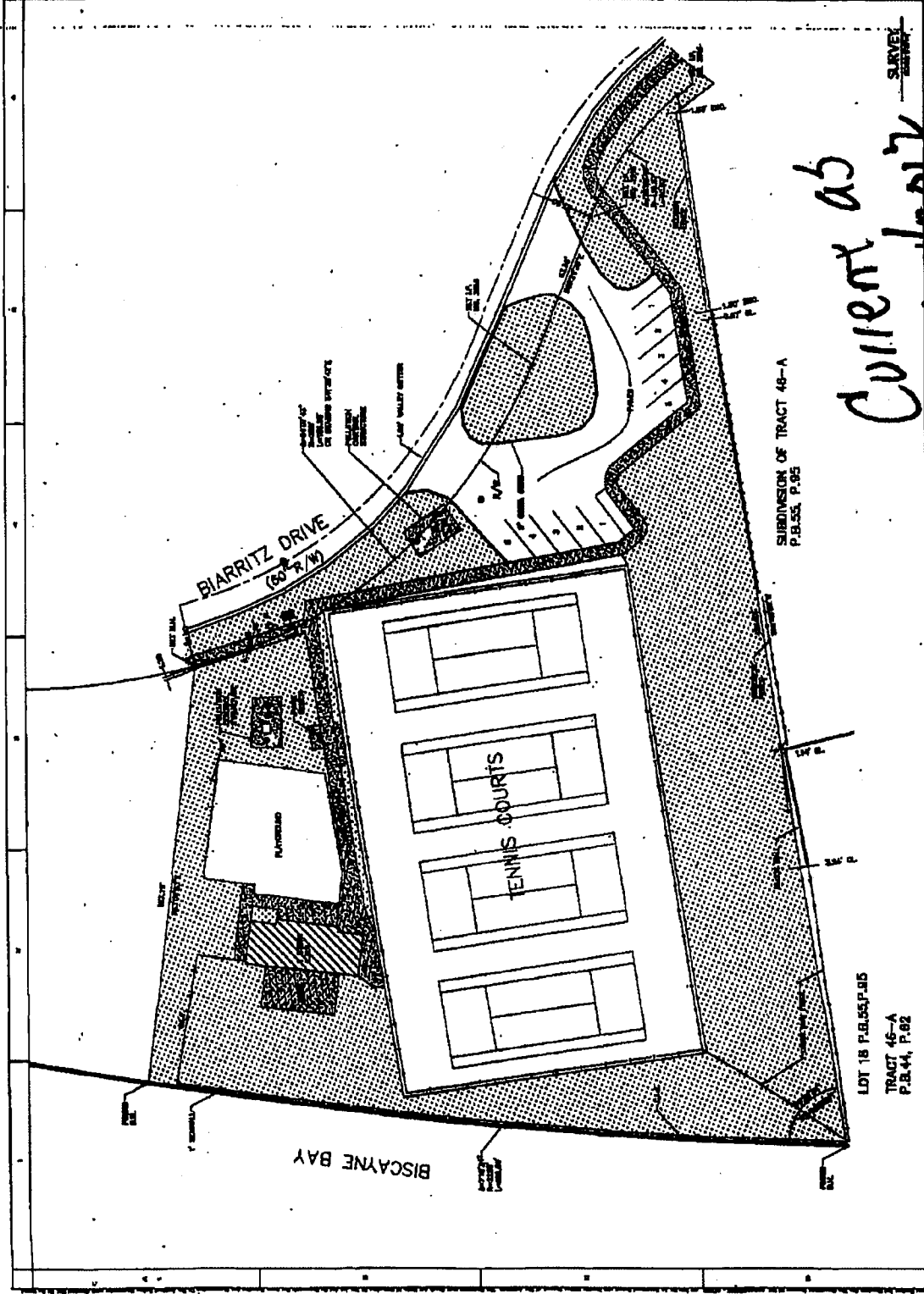


CURRENT PARK  
Center/Restrooms

FUTURE

Shores Park

N Shore Dr



*Client as of 1/2017*

## Smith, Kevin

---

**From:** MARK WOJAK <mwojak65@gmail.com>  
**Sent:** Tuesday, February 14, 2012 9:57 AM  
**To:** Exposito, Jorge  
**Cc:** Smith, Kevin; Magrisso, Julio; jshcare@bellsouth.net; Carmen Browne; Alfredo Rey; gorf675; Ronald Loring; Geoff Green; Gretchen; Andy Fisk; Mickey Mangiorri  
**Subject:** Normandy Shores Waterfront Park  
**Attachments:** Normandy Shores New Park Request.docx; ATT16836142.htm

Dear Commissioner Exposito:

Thank you once more for your, and Mr. Smith and Magrisso's time, ideas, and assistance regarding the city property across from the Normandy Shores Clubhouse.

I took all the information to our board meeting and we discussed options trying to view from both the residents and the city's perspectives. While everyone was excited at the prospect of a new building, we also are sensitive to our city's budget from both a new project and an ongoing maintenance standpoint and their effect on what we can realistically hope to implement.

In that light we are prepared to fully support and promote an open space park similar to Normandie Sud with inclusion of a vita course, i.e. exercise equipment, similar to the park on the corner of Alton Road and Indian Creek. Regarding a dock for fishing there was a strong concern that this would bring into our neighborhood a lot of the folks who are currently fishing off bridges and the like and so we are looking to avoid this feature currently. Also residents are happy with the building and facilities, including tot lot, at Fairway Park so we are OK without these. We are looking for

- • Benches to enjoy the view (assumes demolition of the existing building)
- • Space to throw or kick a ball
- • Vita course equipment to stay fit
- • Simple and cost effective beautification e.g. the post and chain fencing at Normandie Sud, grass, and some trees.

We believe this is far more budget friendly, and thus more immediately achievable than pushing for a building as our goal is to transform the space as quickly as possible for the benefit of our residents.

We are hoping the next step will be for the City to develop some plans based on these thoughts that we can review with you. We are also happy to assist where we can...just let us know what we can do to help start moving this forward. We really want to make this happen by the end of the year and so we would appreciate any related timelines, milestones, and assistance from you that will get us there.

Sincerely,

Mark Wojak

New Projects Committee Chair

Normandy Shore HOA



**CITY OF MIAMI BEACH**

**2010-2014 Capital Budget & 5-Year Capital Improvement Plan**

**General**

**Title:** Normandy Shores Park Tot-Hot/Playground  
**Project #:** p13nrept65  
**Department:** Parks & Recreation  
**Manager:** Kevin Smith/Julio Magrisco/Carlos DaCruz  
**Category:** cip  
**Domain:** Parks  
**Location:** normandysh

OPERATING CATEGORIES		Annual Incremental Cost
FTE's #:	Total:	:

**Description:** The Normandy Shores Park Tot-Hot was constructed over ten years ago and has since deteriorated as a result of its age and harsh saltwater (bayside) environment. Additionally, the area around it has been impacted by the construction of the Normandy Shores streetspace project and has been closed for the past 18 months. It is beyond repair and requires complete replacement of the playground, safety surface, new fencing and FF&E. Additionally, as the City has been doing with other parks in our system, it is recommended that a shade system be added to this location. The nearest park with playgrounds for the residents on the northern point of Normandy Shores is at Fairway Park which is approximately 1 mile and to Normandy Isle Park which is approximately .5 mile. These locations may be out of walking distance for some and require patrons to cross busy streets to get to the parks.

**Justification:** This project will increase our residents' satisfaction with recreational programs and services.

**Project Timeline:**

A/E Request for Qualifications Star	Month/Year	A/E Request for Qualifications C	Month/Year
A/E Agreement Award:			
Planning Start:	Feb-2010	Planning Completion:	Mar-2010
Design Start:	Mar-2010	Design Completion:	Apr-2010
Bid Start:		Bid Completion:	
Construction Contract Award:	Apr-2010	Construction Completion:	Jul-2010
Construction Start:	May-2010		

**Cost Summary**

Cost Category	Prior Years	2009/10	2010/11	2011/12	2012/13	2013/14	Future	Total
ae302 Architect/Engineering Fund 302	0	3,000	0	0	0	0	0	3,000
co302 Construction Fund 302	0	116,500	0	0	0	0	0	116,500
cd302 Contingencies Fund 302	0	10,000	0	0	0	0	0	10,000
eq302 Equipment fund 302	0	5,000	0	0	0	0	0	5,000
pe302 Permitting/Fees Fund 302	0	1,000	0	0	0	0	0	1,000
<b>Total:</b>	<b>0</b>	<b>135,500</b>	<b>0</b>	<b>0</b>	<b>0</b>	<b>0</b>	<b>0</b>	<b>135,500</b>

**Funding Summary**

Funding So	Prior Years	2009/10	2010/11	2011/12	2012/13	2013/14	Future	Total
302 Pay-As-You-Go	0	135,500	0	0	0	0	0	135,500
<b>Total:</b>	<b>0</b>	<b>135,500</b>	<b>0</b>	<b>0</b>	<b>0</b>	<b>0</b>	<b>0</b>	<b>135,500</b>

**I  
T  
E  
M**

**F  
I  
V  
E**