

8" REINFORCED CONCRETE SLAB  
#4 @ 12" O.C. TOP & BOTTOM (TYP. LONG RUN),  
#5 @ 6" O.C. BOT.(TYP. SHORT RUN)

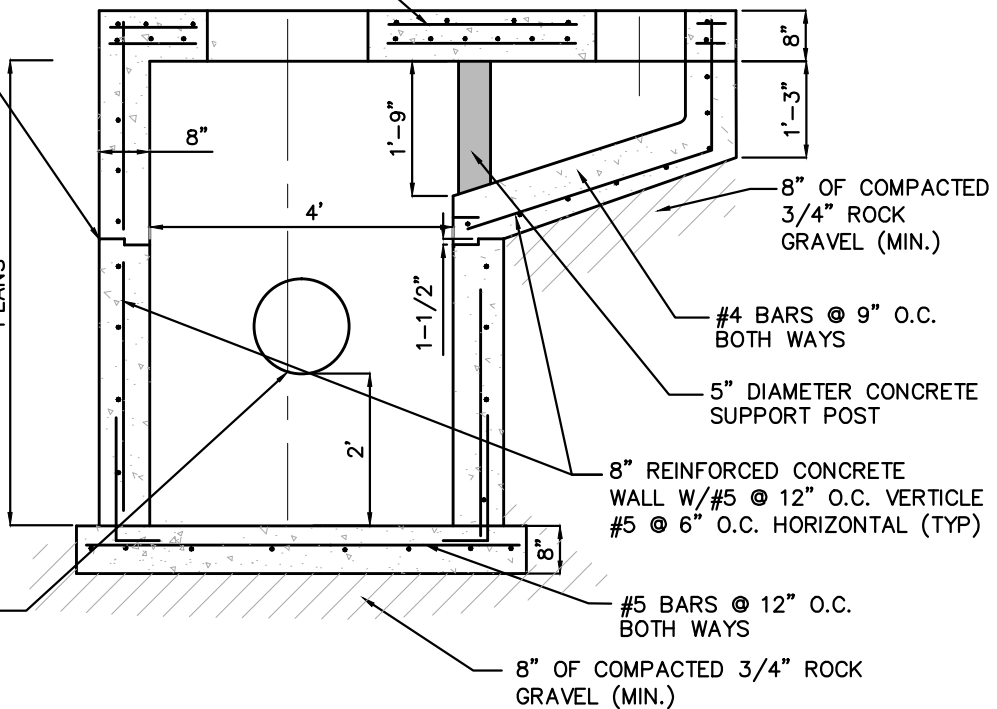
EL.+  
TOP OF SLAB

PROVIDE KEY JOINT SEALED WITH GROUT ALL AROUND

6'-0" UNLESS OTHERWISE SHOWN ON PLANS

EL.  
TOP OF SLAB

REFER TO PLAN FOR STORM PIPE SIZE AND INVERT



DRAINAGE STRUCTURE NOTES

1. PROVIDE SHOP DRAWINGS OF STRUCTURES.
2. PRECAST CONCRETE MANHOLES SHALL CONFORM TO ASTM C478, SHALL BE TYPE II ACID RESISTANT CEMENT AND SHALL MAINTAIN A MINIMUM COMPRESSIVE STRENGTH OF 4000 P.S.I. IN 28 DAYS.
3. REFER TO F.D.O.T. INDEX 200 FOR ADDITIONAL DETAILS AND SPECIFICATIONS.
4. ALL REINFORCING BARS SHALL BE ASTM A615 GRADE 60, ALL COVER SHALL BE 3" MIN.

OFF-SET DRAINAGE STRUCTURE DETAIL  
N.T.S.

F:\WORK\SALL\CAD-DWG\STANDARDS\CMB\_STANDARD\_DETAILS\Public Works Manual\CMB Drainage Details