

SECOND CUT:

EXISTING PAVEMENT SHALL BE SAW CUT ALONG A NEAR STRAIGHT LINE TO THE FARTHEST POINT OF BROKEN OR DISTURBED ASPHALT.

MILL AND RESURFACE MIN. 1" TO A FULL LANE OR AS DIRECTED BY THE PUBLIC WORKS DEPARTMENT PRIOR TO PLACING PAVEMENT, CITY PUBLIC WORKS INSPECTION IS REQUIRED.

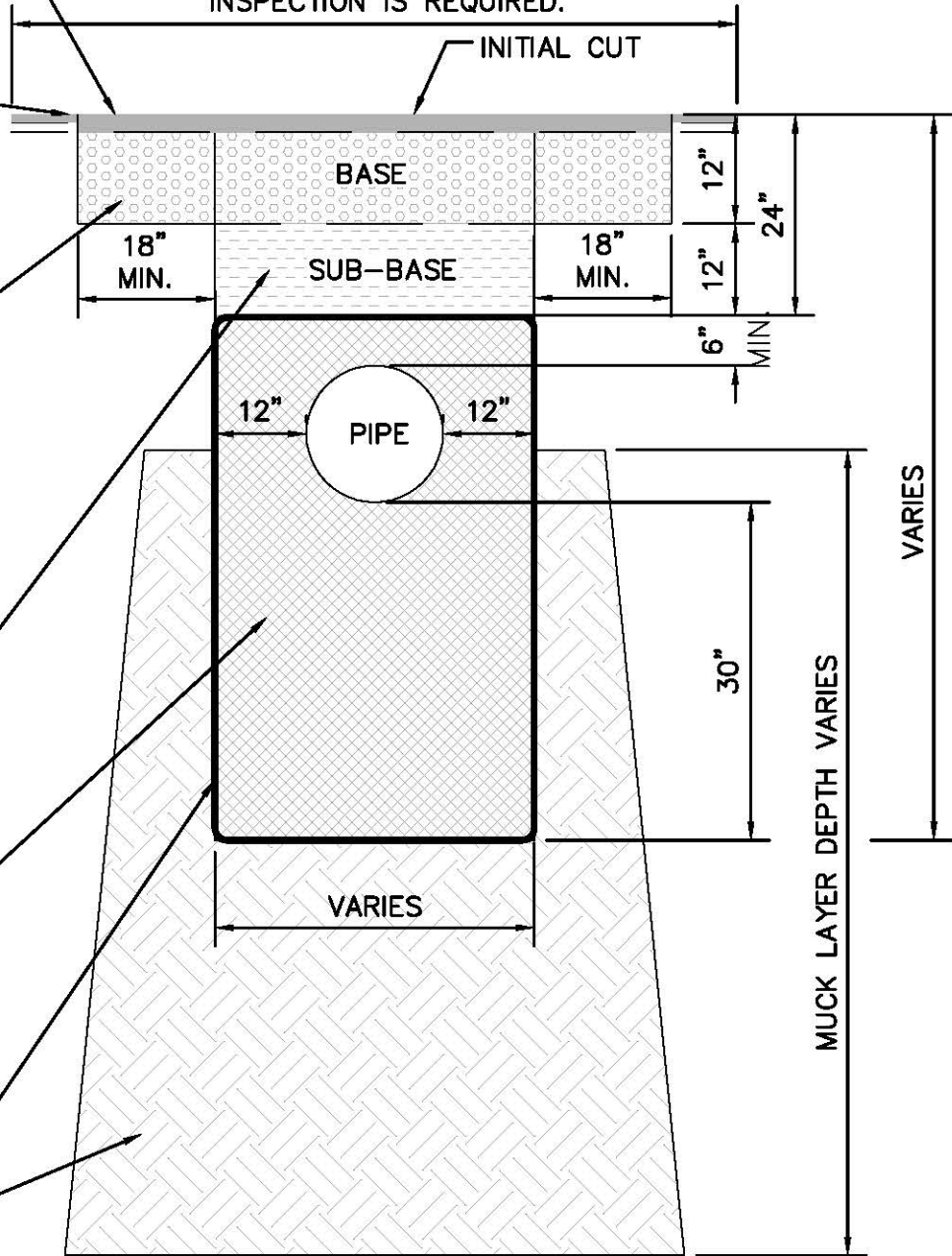
ASPHALTIC CONCRETE TYPE S-III MINIMUM 2 INCHES THICK. APPLY TACK COAT TO BASE AND ALONG EXISTING ASPHALT EDGES. COMPACTED LIME ROCK BASE COURSE (LBR100) TO MATCH THICKNESS OF ADJOINING BASE (12" MIN.) COMPACTED TO A DENSITY OF 98%. (CONTRACTOR MUST PROVIDE DENSITY TEST RESULTS PRIOR TO PAVING) MODIFIED PROCTOR T180

CLEAN SUITABLE BACKFILL COMPACT IN 12 INCH LAYER TO 98% DENSITY. MODIFIED PROCTOR T180 LBR OF 40 OR GREATER.

CLEAN SUITABLE BACKFILL. COMPACT TO 90% DENSITY. THIS MATERIAL SHALL BE FREE OF STONES LARGER THAN 3/8" DIA.

WOVEN GEOTEXTILE (TERRATEX HD)

EXISTING MATERIAL TO BE REMOVED WITHIN TRENCH LIMITS.



NOTE:

A-8 MATERIAL SHALL NOT BE STOCKPILED WITHIN THE WORK ZONE, BUT REMOVED IMMEDIATELY FOR DISPOSAL.

UTILITY TRENCH RESTORATION DETAIL
UNDER ASPHALT PAVEMENT
N.T.S.

F:\work\SALLICAD-DWG\STANDARDS\CMB_STANDARD_DETAILS\Public Works Manual\CMB Site Earthwork Details