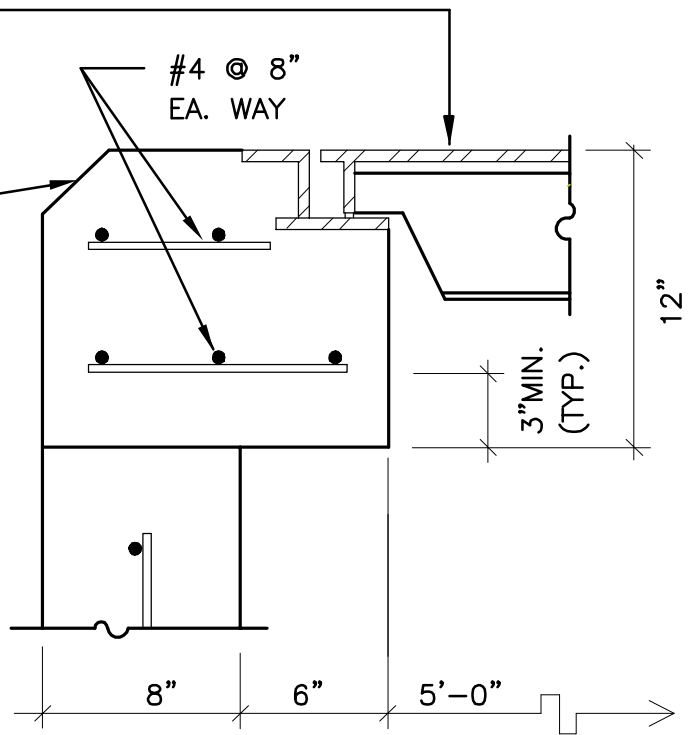


60"X60" ACCESS ALUM. HATCH W/ S.S.
 SPRINGS AND HINGES, RATED FOR H-20
 LIVE LOAD, USF & M TYPE AHD

1" CHAMFER FOR ALL CONC.
 CORNERS AS SHOWN



VALVE PIT SECTION DETAIL 1
 N.T.S.

F:\work\SALL\CAD-DWG\STANDARDS\CMB_STANDARD_DETAILS\Public Works Manual\CMB Pump Station Details